



MY HEALTH CARE: PROTECTING PATIENT CHOICES FROM RELIGIOUS DOCTRINE

Sarah Dunne, Legal Director
Margaret Chen, Floyd & Delores Jones Family Fellow

Why This Issue Matters

- Religious ideology dictating health care
- Patient care put at risk
 - Reproductive Health Care
 - End-of-Life Health Care
 - Discrimination Against LGBT Families
- Public dollars subsidizing religious hospitals
- Increasing religious control of health care facilities

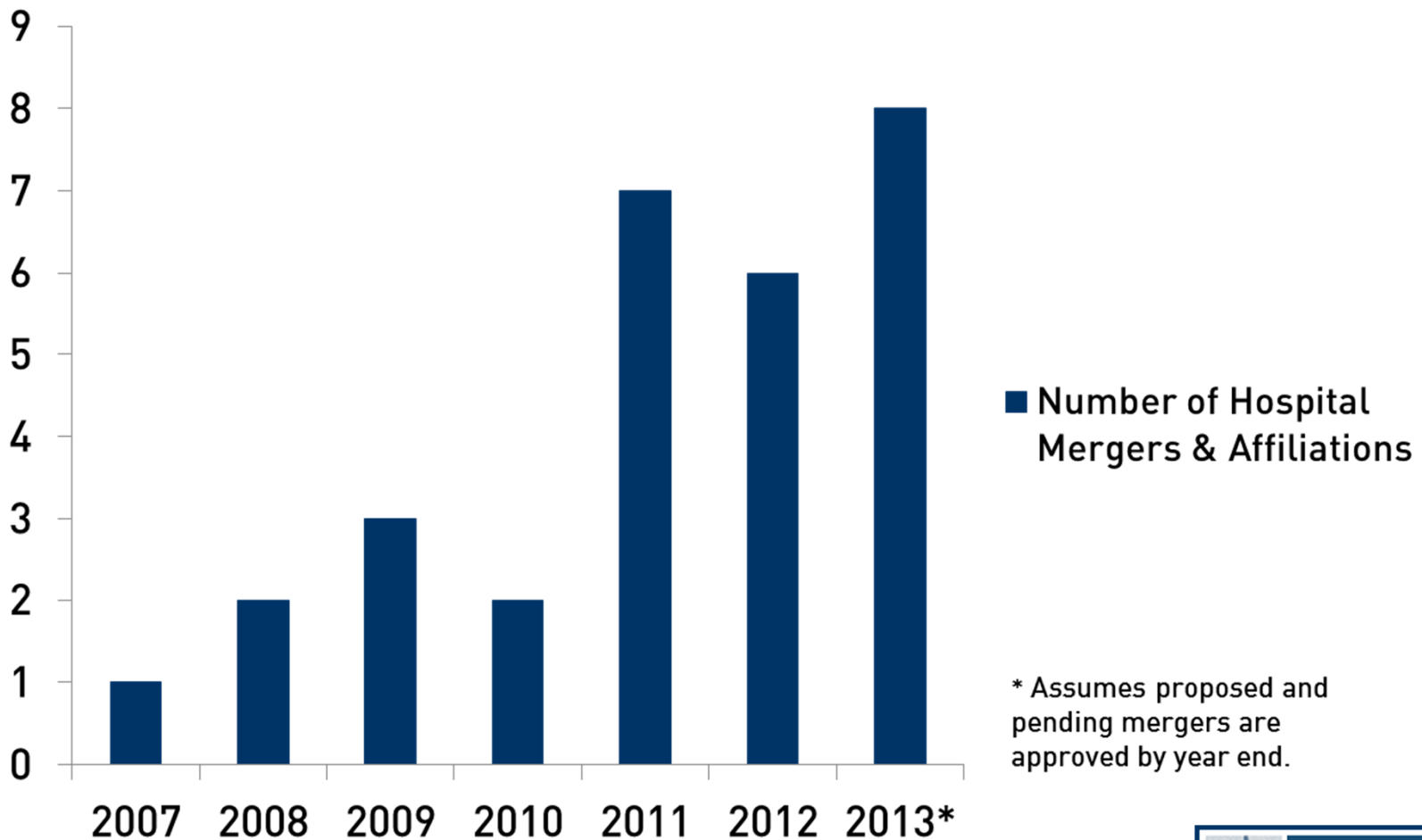


Recent Actions by Catholic Health Care Corporations

- Spokane (2010) – Labs
- Bellingham (2012) – Labs
- San Juan (2012) – Hospital
- Sedro-Woolley (2013) – Hospital



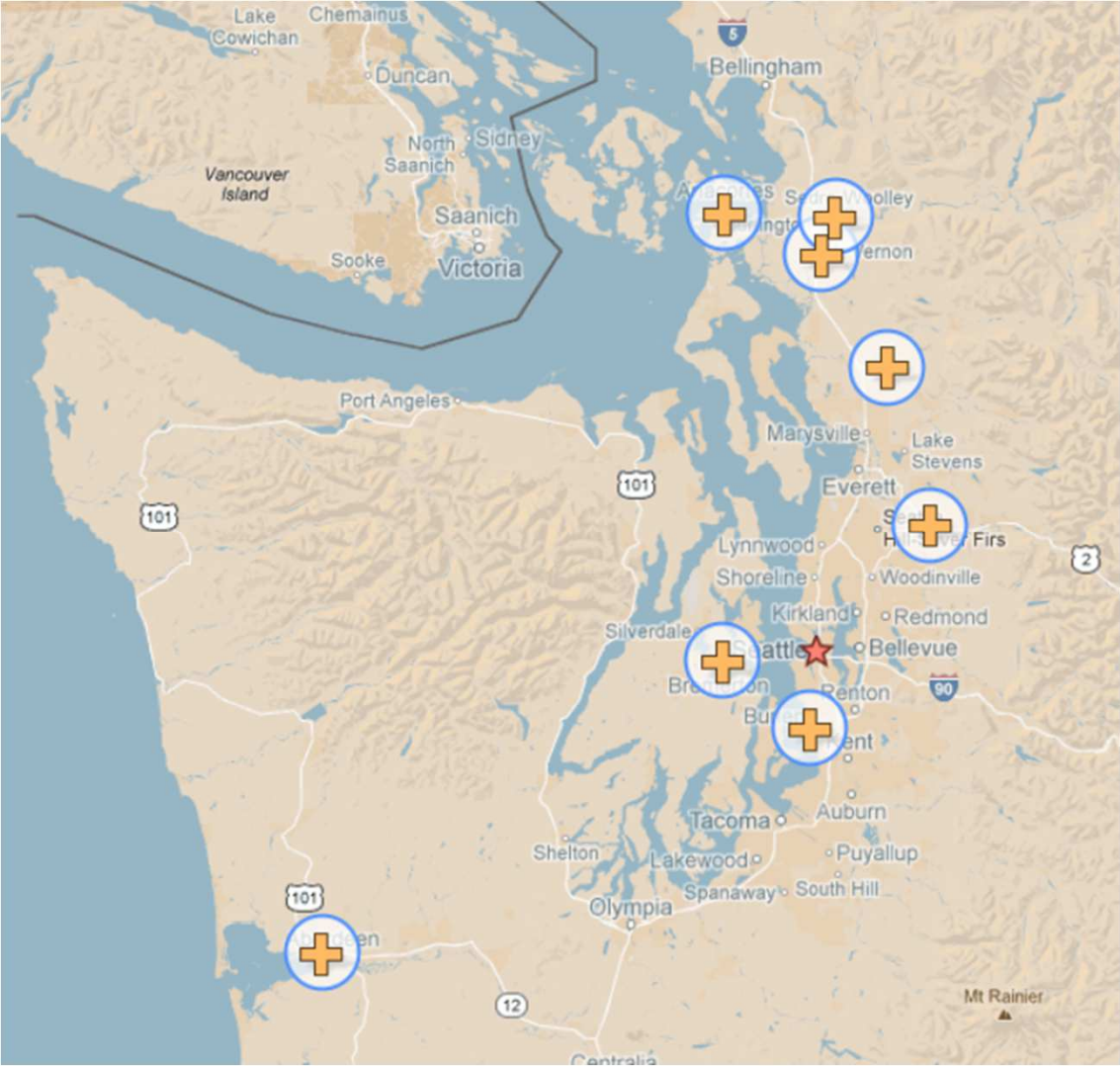
Hospital Consolidations Have Increased Dramatically in Washington



Source: Washington State Hospital Association



Communities with Hospitals Looking to Consolidate in 2013



More Than Hospitals Are Affected

- Physician Practice Groups
- Medical Clinics
- Medical Laboratories
- Medical Student Training



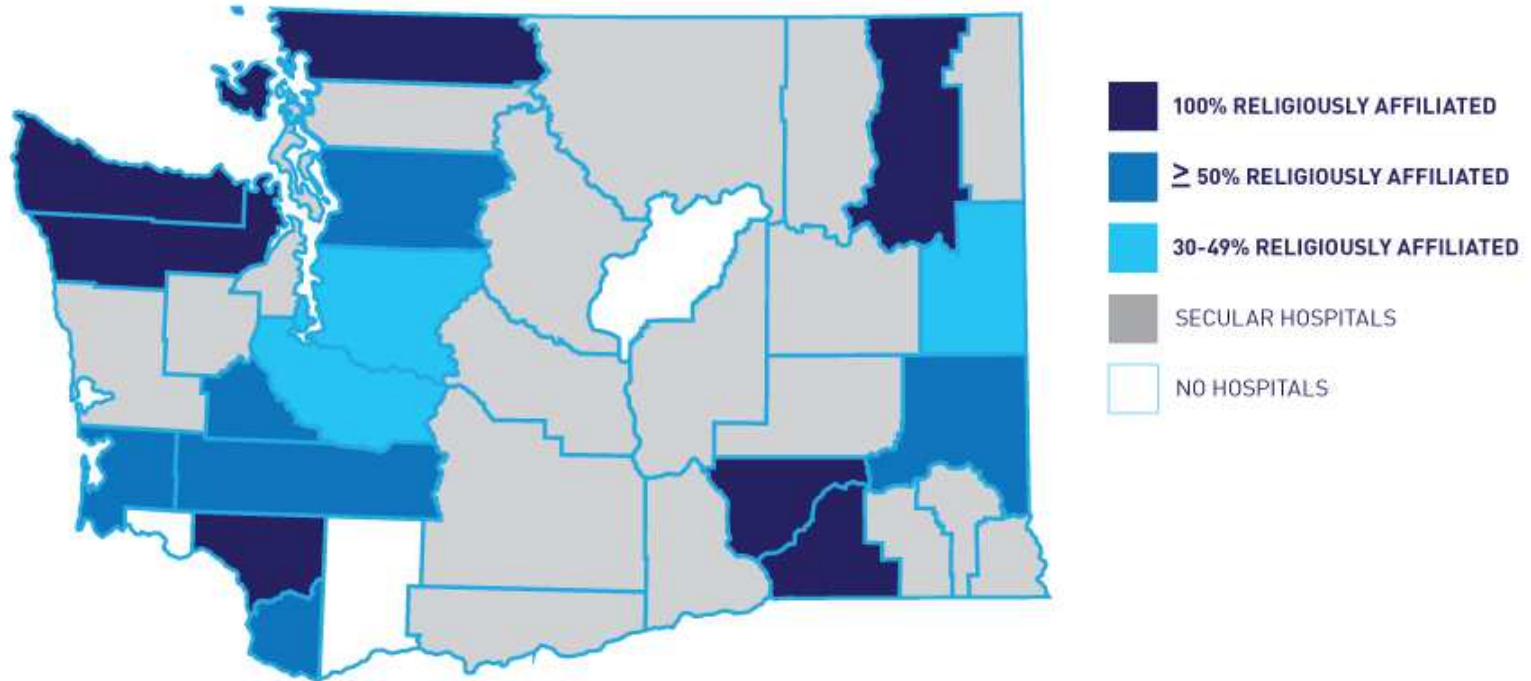
4 of 5 Religious Health Care Corporations in Washington Are Catholic

- Ascension Health
- Catholic Health Initiatives
(Franciscan Health System)
- PeaceHealth
- Providence Health & Services

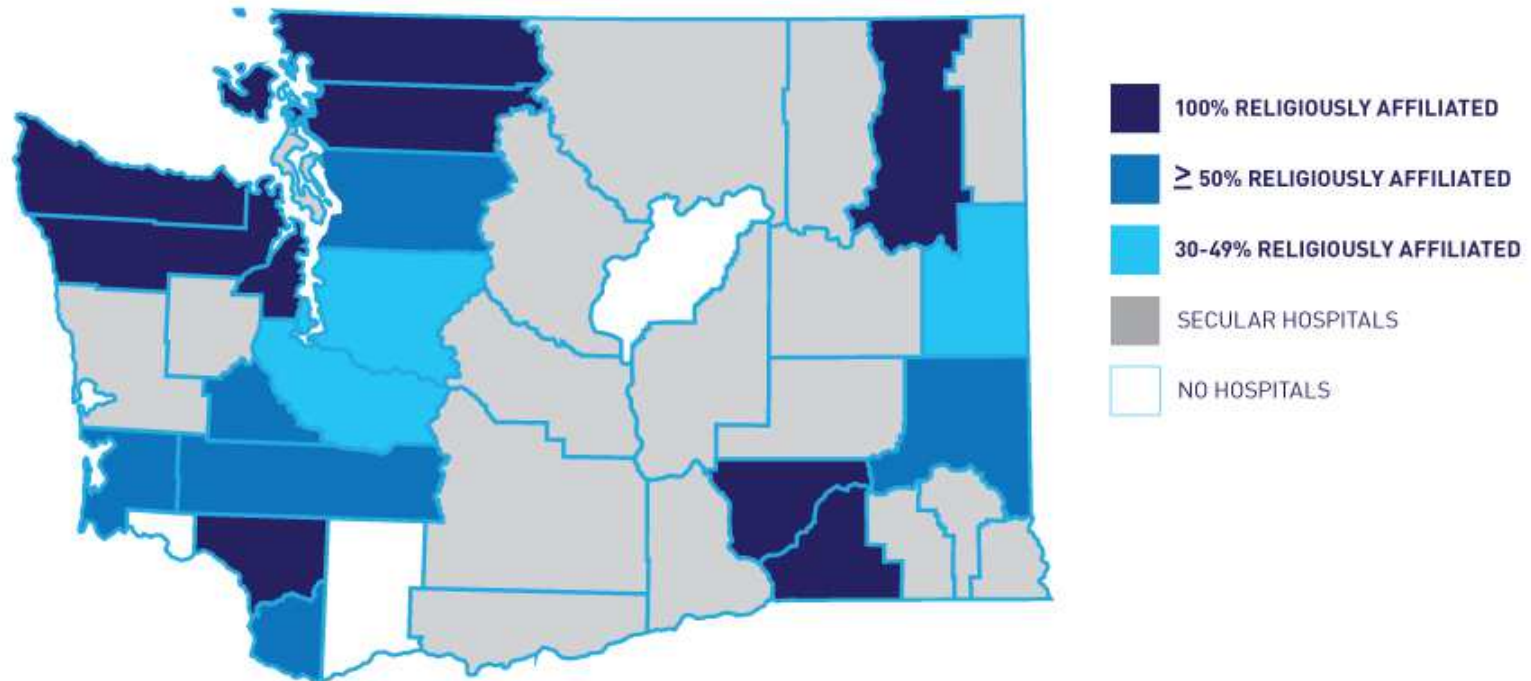
- Adventist Health



Today, Religious Hospitals Dominate Washington's Population Centers



If Other Hospitals Consolidate with Religious Health Care Corporations ...



* Assumes proposed and pending mergers are approved by 2013 year end.



Ethical and Religious Directives for Catholic Health Care Services

- Authored by U.S. Conference of Catholic Bishops
- Religious doctrine dictates service



Source: Ethical and Religious Directives for Catholic Health Care Services, 2009



Church Intrudes on Doctor-Patient Relationship

“The Church’s moral teaching on health care nurtures a truly interpersonal professional-patient relationship. This professional-patient relationship is never separated, then, from the Catholic identity of the health care institution.”

Source: Ethical and Religious Directives for Catholic Health Care Services, 2009



Catholic Health Care Directives Affect Employment



“Catholic health care services must adopt these Directives as policy, require adherence to them within the institution as a condition for medical privileges and employment, and provide appropriate instruction regarding the Directives”

Source: Ethical and Religious Directives for Catholic Health Care Services, 2009



The Directives Affect Reproductive Health Care

- Fertility Treatment Not Allowed

“Reproductive technologies that substitute for the marriage act are not consistent with human dignity.”



Source: Ethical and Religious Directives for Catholic Health Care Services, 2009



The Directives Affect Reproductive Health Care

- Birth Control Not Allowed



“Catholic health institutions may not promote or condone contraceptive practices.”

“Direct sterilization of either men or women, whether permanent or temporary, is not permitted in a Catholic health care institution.”

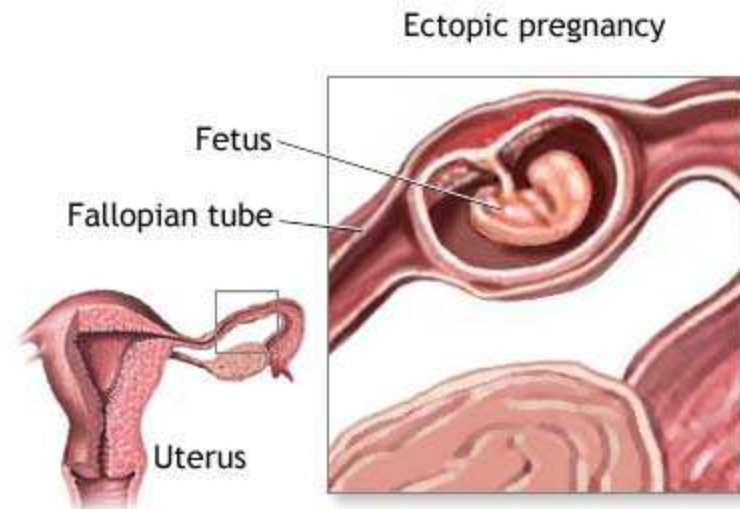
Source: Ethical and Religious Directives for Catholic Health Care Services, 2009



The Directives Affect Reproductive Health Care

- Limits Options for Abnormal Pregnancy

“In case of extrauterine pregnancy, no intervention is morally licit which constitutes a direct abortion.”



Source: Ethical and Religious Directives for Catholic Health Care Services, 2009



The Directives Affect End-of-Life Health Care

- Advance Directive May Not Be Honored



“a Catholic health care institution . . . will not honor an advance directive that is contrary to Catholic teaching.”

Source: Ethical and Religious Directives for Catholic Health Care Services, 2009



The Directives Affect End-of-Life Health Care

- **Death With Dignity Not Allowed**

“Catholic health care institutions may never condone or participate in [Death With Dignity] in any way.”



“Patients experiencing suffering that cannot be alleviated should be helped to appreciate the Christian understanding of redemptive suffering.”

Source: Ethical and Religious Directives for Catholic Health Care Services, 2009



The Directives Affect End-of-Life Health Care

- **Do-Not-Resuscitate Orders May Not be Honored**

“The free and informed judgment made by a competent adult patient concerning the use or withdrawal of life-sustaining procedures should always be respected and normally complied with, unless it is contrary to Catholic moral teaching.”



Source: Ethical and Religious Directives for Catholic Health Care Services, 2009



The Directives Affect Health Care for LGBT Individuals



- Recognition of Same-Sex Couples
- Fertility Treatments
- Transgender Health Care

The Directives Are Contrary to State Public Policy and Law

Washington Constitution

- Equal Rights Amendment
- Religious Freedom

Reproductive Privacy Act (1991)

- “Every individual has the fundamental right to choose or refuse birth control”
- “Every woman has the fundamental right to choose or refuse . . . abortion.”

Anderson Murray Anti-Discrimination Law (2006)

- Prohibits discrimination based on sexual orientation and gender expression or identity

Death With Dignity Act (2008)

- Allows terminally ill adults to access lethal doses of medication from medical and osteopathic physicians

Marriage Equality (2012)

- Removes the prohibition on marriage for same-sex couples



The ACLU of Washington is Taking Action

- Gathering Stories of Patients and Providers
- Researching for Litigation and Legislative Advocacy
- Educating the Public
- Reaching Out to Key Stakeholders



The screenshot shows the ACLU of Washington website. At the top left is the ACLU logo with the text 'AMERICAN CIVIL LIBERTIES UNION of WASHINGTON STATE'. To the right is the slogan 'BECAUSE FREEDOM CAN'T PROTECT ITSELF'. Below the header is a navigation menu with links for Home, Blog, Newsroom, Issues, Cases, Resources, and Get Help. The main content area is titled 'Patient and Provider Web Intake'. It features a blue banner with a white cross icon and the text 'DEFENDING HEALTH CARE ACCESS FOR ALL'. Below the banner is a paragraph asking if the user or their family has been denied reproductive health care or end-of-life services by a religiously-affiliated medical facility, and a link to 'Tell us your story.'. Another paragraph explains the ACLU's concern about reproductive health care and end-of-life services being limited based on religious views. A third paragraph asks for experiences accessing or providing reproductive and end-of-life health services, counseling, and referrals in Washington state. Below the text is a note that responses will be kept confidential. At the bottom of the form are three input fields labeled 'First Name *', 'Last Name *', and 'Email *'.



How Can You Help?

- **Talk** to your friends and colleagues and make them aware of how their health care choices are at risk
- **Share** the ACLU's patient and provider intake questionnaire with friends and colleagues
- **Learn** more about this issue at:
www.aclu-wa.org

